



Future Forward
Challenge

**Being in
School is
Important
to Every
Student's
Success**

Did you know:

- Most teachers can predict student success based on their attendance during the first month of school
- Students who miss more than 4 days in September are over 85% more likely to become chronically absent
- According to the 2012-13 MiSchoolData.org report, over 13,000 students in Washtenaw County were chronically absent
- Students ages 6-18 are required to attend school according to Michigan law

Being chronically absent

- Is linked to lower reading abilities in early elementary ages
- Pushes middle school grade students off the path to high school graduation
- Lessens the odds that high school graduates will enroll and succeed in college

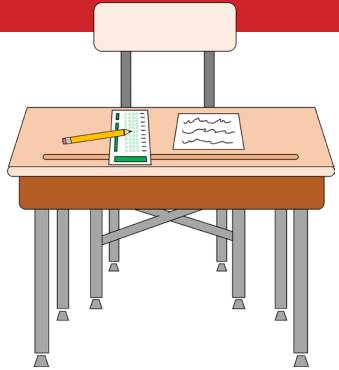
**A⁺TEND TODAY
ACHIEVE TOMORROW**

To participate in your school's reward program, sign the back of this Future Forward Challenge card and turn it in at your school's office

What I can do:

- Talk about attending school regularly
- Create a stable home environment with a routine that includes school
- Make medical appointments for after school hours whenever possible
- Schedule vacations and other family events outside of school hours/days
- Contact the school if work schedules, transportation, or family health issues impact the ability to attend class.

Ensuring the success of our students' futures is a team approach!



Ann Arbor Public Schools
Chelsea School District
Community Action Network
Dexter Community Schools
Dispute Resolution Center
Eastern Michigan University
Lincoln Consolidated Schools
Manchester Community Schools
Milan Area Schools
Ozone House
Saline Area Schools
Student Advocacy Center

Task Force for Educating At-Risk Youth
Washtenaw County Trial Court
Washtenaw County Prosecutor
Washtenaw County Sheriff's Office
Washtenaw Intermediate School District
Washtenaw & Livingston County DHS
Whitmore Lake Public Schools
Youth and Family Services
Ypsilanti Community Schools

We accept the Future Forward Challenge and commit to maintaining a regular attendance during the 2015-2016 school year.

Child's Signature/Grade

School

Parent/Guardian's Signature